



**MEACOCK & JONES**

6 Bedrooms

House - Detached

Located in Hutton  
Mount

**£3,700,000**



[enquiries@meacockjones.co.uk](mailto:enquiries@meacockjones.co.uk)

[www.meacockjones.co.uk](http://www.meacockjones.co.uk)

01277 218485



# Little Paddock Challacombe Close Hutton Mount

Brentwood | Essex | CM13 2LU



A most substantial 6,346 square foot family home, offering extensive luxury accommodation, ideally positioned within the heart of this private residential estate. Set behind private gates, the property is situated on a spacious and well screened 0.348 acre plot and located a short and pleasant walk from Shenfield mainline railway station and Crossrail terminus.







# Little Paddock Challacombe Close

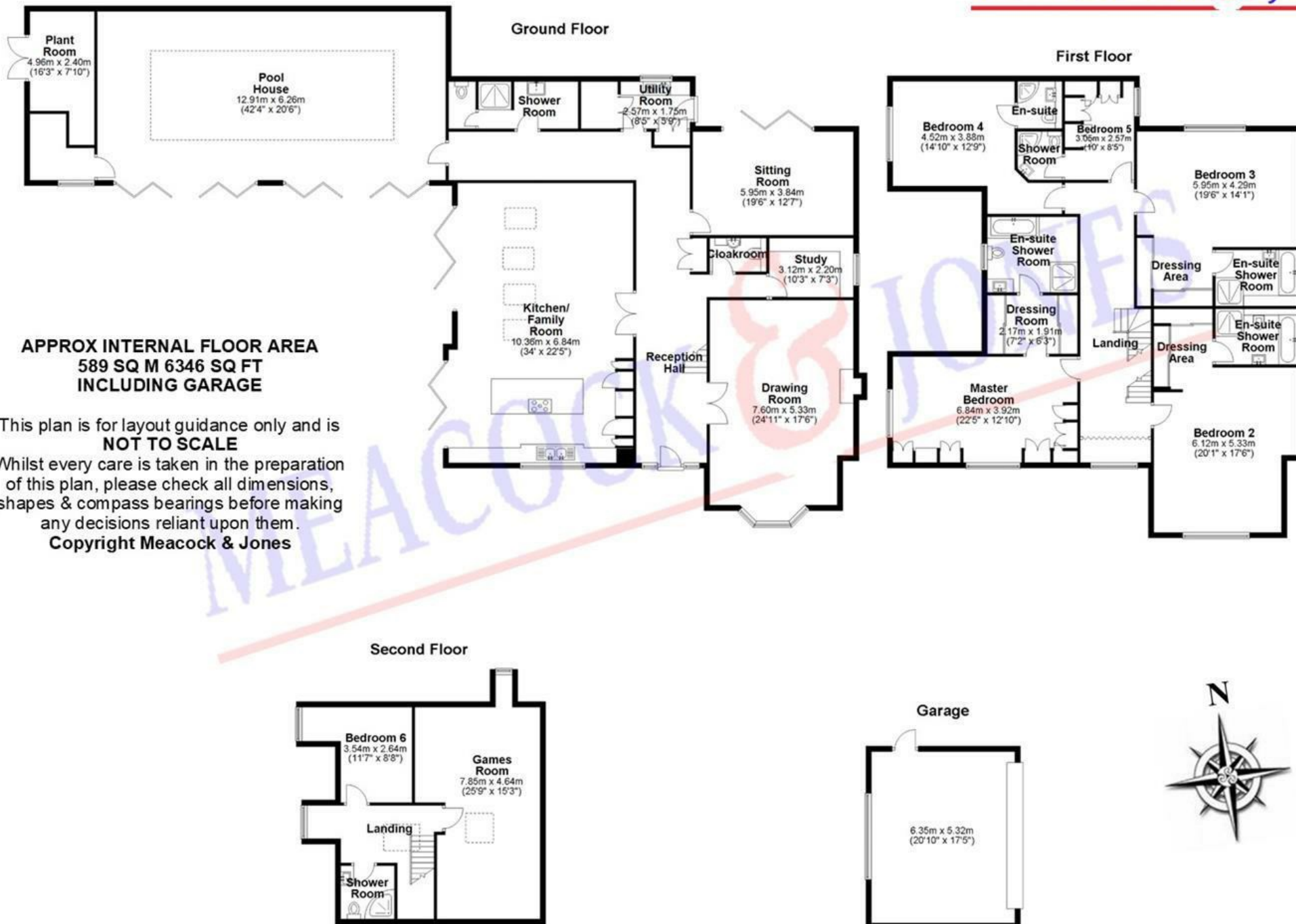
£3,700,000 Freehold

- Six Bedrooms
- Three Reception Rooms
- Indoor Swimming Pool Complex & Games Room
- 0.348 Acre Plot
- Seven Bath/Shower Rooms
- Clive Christian Kitchen/Family Room & Utility Room
- 6,346 Square Foot (incl Double Garage)
- Luxuriously Appointed









**MEACOCK & JONES**

106 Hutton Road  
Shenfield  
Essex  
CM15 8NB

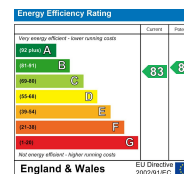
01277 218485

enquiries@meacockjones.co.uk

[www.meacockjones.co.uk](http://www.meacockjones.co.uk)

**Council Tax Band:**

**Local Authority:** Brentwood Borough Council



Whilst care has been exercised in the preparation of these particulars, statements about the property must not be relied upon as representations or statements of fact. Prospective purchasers must make and rely upon their own enquiries and those of their professional representatives. All measurements, areas and distances given are approximate. We have not tested any apparatus, equipment, fixtures, fittings or services and so cannot verify they are in working order. Any fixtures or fittings detailed in these particulars are not necessarily included in the sale price and Meacock & Jones and their staff accept no liability for any errors contained therein.

**ZOOPLA**

**rightmove**

**onTheMarket.com**

**The Property Ombudsman**

**tsj**  
APPROVED CODE  
TRADING STANDARDS.GOV.UK

**naea | propertymark**  
PROTECTED

